

Visual Supervisor

One program for all CS controllers and intelligent tightening

Visual Supervisor (VS) is the user-friendly Windows® -based software program that simplifies setup and troubleshooting of these intelligent tightening system controllers:

- CS2700
- CS4700
- CS4746
- CS5000
- Workstation
- CS7000

Such systems can have:

- One intelligent electric brushless tightening tool and a single-channel controller
- Assorted intelligent electric nutrunners operated by one or more single or multi-channel controllers in a network (with as many as 32 spindles total, 99 with Ethernet).

VS can exchange tightening rundown results and real time fastening cycle status with industry buses such as:

- DeviceNet
- Modbus TCP/Ethernet IP
- Profibus DPV1

VS makes it easy to set up, collect and manage your tightening torque strategy.

- Enter parameter values
- Assign soft I/O using the drag and drop method
- Create sequences and steps
- Read bar codes off parts
- View, collect, graph, print and store fastening rundown data on a hard drive or network database
- Troubleshoot errors quickly
- Adapt to wireless communication

VS lets you choose the torque strategy that is right for your application, whether it calls for hand-held tools or fixtured spindles.

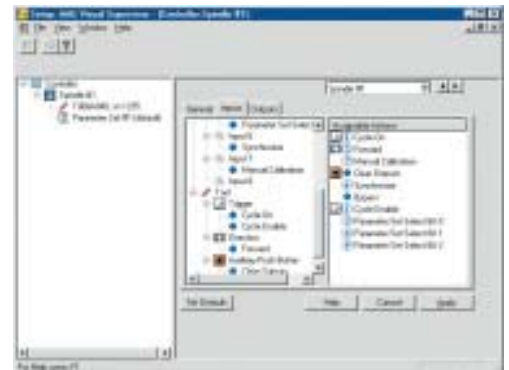
VS automatically collects data for local drive storage. Data can be saved to any third-party database program for network storage, retrieval and sharing.

VS Program user interface screens include:

- **Readings** – For a single tool the VS readings screen displays a large box showing the torque, angle (in degrees) and the parameter set of the last cycle. The box is green when the fastening is accepted, or red when rejected. If multiple tools are monitored, VS displays a status line for each.
- **Setup** – utilizes Windows® tabs and drag and drop features for easy setup of tightening system inputs, outputs, and parameter sets for each tool that is attached.
- **Diagnostics** – provides I/O, transducer and communications information for troubleshooting.
- **Graphs** – automatically saves accepted and rejected fastening cycle waveforms as graphs, updates graphs between cycles, and displays/prints multiple graphs.
- **Event Log** – provides a running list of the date, time, spindle name, address and description, user and station of all tightening performed.

Detachable and Embedded Versions of VS

- VS loaded on a laptop PC running Windows XP® or 2000 is connected via RS-232 port to a single-channel CS controller. The portable VS program may be taken from one CS controller to another, therefore it is *detachable*.
- VS is permanently installed (embedded) on the built-in industrial computer of multi-spindle CS controllers (for up to 32 channels) operating on Windows NT®. VS is also embedded on the CS5000 Workstation which controls multi-spindle 46/66 Series nutrunner systems.



| MODEL | PART NUMBER | DESCRIPTION |
|-----------------|---------------|---|
| 464000SVSSFTWR* | 615 004 139 9 | Visual Supervisor (VS) Program, Version X.XX, CDR |

* X's indicate version. Number changes for each release

